



20
OCTOBER, 2022
ON THE INSA CAMPUS

LOCAL PARTNERSHIP ARENA

2ND EDITION

Welcome to the second Local Partnership Arena driven by INSA
as a member of the European Consortium of Innovative Universities (ECIU)

This event will be an exchange forum for companies, students,
associations, local government, researchers and teachers.



<https://lpa-insa.sciencesconf.org/>

ABOUT US

INSA Group

INSA Group is the largest French public community in engineering (14 graduate schools) that promotes the core values of the INSA model such as diversity, humanism, excellence, innovation and strategic foresight. INSA scientific teams are actively involved in cutting-edge research addressing both scientific, industrial and societal challenges towards sustainable and relevant solutions.

- ▶ 4,600 international students
- ▶ 99,000 alumni
- ▶ 8 overseas offices across the world
- ▶ 60 internationally renowned INSA research laboratories.
- ▶ 1,700+ researchers (teacher-researcher & researchers).
- ▶ 1,300+ PhD candidates.
- ▶ Around 4,400 publications co-authored in the best scientific journals each year.

INSA Toulouse

With 19,000 alumni across all economic sectors, the “Institut National des Sciences Appliquées” of Toulouse, an international, pluri-disciplinary, state-funded engineering school, is recognised for the excellence of its five-year education which attracts students of a high academic level.

INSA-Toulouse provides a range of 8 engineering specialisations,

- ▶ Biological engineering
- ▶ Applied Mathematics
- ▶ Mechanical engineering
- ▶ Applied physics
- ▶ Civil engineering
- ▶ Chemical engineering
- ▶ Computer and networks engineering
- ▶ Automatic control and Electronics

The courses, linked to the latest scientific advances, are supported by the activity of **cutting-edge research laboratories**, backed by large industrial groups, for example in the fields of new materials for aeronautics, environmental protection techniques and nano-objects..

ECIU

The ECIU University is an EU-funded European University that will create a completely new higher education and research model on a European scale: challenge-based learning, research and innovation.

The ECIU University brings together learners, teachers, and researchers to cooperate with cities and businesses to solve real-life challenges.

These challenges can be chosen by students from the different universities. The students will be able to choose micromodules at any of the universities, to help design solutions for the challenges.

The first three-years phase of the ECIU University focuses on the UN Sustainable Development Goal 11 “Sustainable cities and communities”.

ARENAS AND THEIR OBJECTIVES







The arenas are open collaborative forums, during which different regional actors and higher education institutions, meet in order to suggest and discuss challenges linked with societal issues. Over 70 participants are expected for this second edition!

The arenas have two main objectives :

- ▶ Design several interdisciplinary challenges
- ▶ Build, develop and facilitate follow-up projects



WHY JOIN US

YOU ARE	OPPORTUNITIES	FOLLOW UP
 A COMPANY	<ul style="list-style-type: none"> ▶ Get involved and drive circular economy in Occitanie. ▶ Meet the actors of tomorrow. ▶ Brainstorm on specific challenges in my business field. ▶ Meet experts. 	<ul style="list-style-type: none"> ▶ Identify concrete challenges in your business area and build solutions with a large international community of researchers and students. ▶ Develop related local projects with INSA.
 AN ASSOCIATION	<ul style="list-style-type: none"> ▶ Voice my opinion. ▶ Support initiatives of the local community. ▶ Network with academic and non-academic regional partners. 	<ul style="list-style-type: none"> ▶ Collaborate with different actors in the resolution of the challenge. ▶ Define concrete and pragmatic actions to support local initiatives.
 LOCAL GOVERNMENT	<ul style="list-style-type: none"> ▶ Make Toulouse and the region visible at the European map. ▶ Contribute to the dynamic image of our region and facilitate exchanges with other European regions and cities. 	<ul style="list-style-type: none"> ▶ Opportunity to bring together local and European experts to solve key regional and local challenges
 A STUDENT	<ul style="list-style-type: none"> ▶ Engage in innovate learning approaches. ▶ Contribute to shaping the future. ▶ Meet a variety of academic and non-academic partners. ▶ Improve communication in English in a concrete way. 	<ul style="list-style-type: none"> ▶ Internship. ▶ Fantastic networking platform. ▶ Junior Insa Service.
 A TEACHER	<ul style="list-style-type: none"> ▶ Engage in interdisciplinary. ▶ Generate and develop a European network. ▶ Take part in innovative teaching approaches. ▶ Educate in critical thinking. 	<ul style="list-style-type: none"> ▶ Themes for research internship. ▶ Enhance social and culture intelligence. ▶ Feed concrete examples for case studies.
 A RESEARCHER	<ul style="list-style-type: none"> ▶ Participate to sustainability of tomorrow. ▶ Meet with researchers from other disciplines. ▶ Attract students. ▶ Be recognized by an international community. ▶ Be recognized by regional government and companies. 	<ul style="list-style-type: none"> ▶ Collaborate with companies on research and PhD projects. ▶ Attract public fundings. ▶ Share with the European scientific community. ▶ Propose topics for student internships.

SECOND ARENA THEME: TRANSPORT AND MOBILITY



DEFINING THE CHALLENGES

The challenge framing will consist in transforming shared problems into challenges that unlock opportunities for the future.

The different stakeholders will have the opportunity to openly discuss and share their visions and concerns related to circular economy. Through this experience sharing and brainstorming approach, some common topics will be identified and further refined to become the challenges.

During the arena, we will give you examples of challenges and a template to help structure your challenge.



FEEDBACK FROM THE FIRST EDITION OF THE LOCAL PARTNERSHIP ARENA

INSA Toulouse organised its first Local Partnership Arena on the 4th of November 2021 on the INSA Campus of Toulouse. The theme of this arena was circular economy.

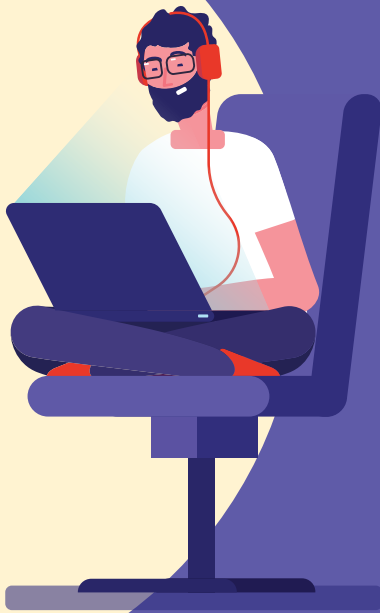
Over 35 potential challenges ideas were developed from the 6 round tables around topics such as how to recycle materials from a demolition site and recycle waste water in collective building. Some of these challenges have been deployed in the context of professional contracts, forms of apprenticeship and will be further deployed for ECIU University.



Check what the participants said about the event :

- ▶ Bertrand Raquet, President of the INSA Group and Director of INSA Toulouse “We are convinced that this initiative will lead to a strong commitment from all stakeholders, with the desire to co-build projects that take into account societal issues”.
- ▶ From a company representative “This is an opportunity to meet our ecosystem in a different context.”
- ▶ From a non-profit organisation “A very enriching day with a great diversity of stakeholders that allows us to come up with rich, multidisciplinary challenges with high stakes for the company and/or the community as well as possible related collaborations.”
- ▶ From a teacher “meet up, diversity, openness, getting out of one’s microcosm, collective and collaborative work”.
- ▶ From a student “This event represents for me an opportunity to meet several associations and companies, but also an opportunity to show my place as a student and to create challenges that can have a real impact in society.”
- ▶ From a local authority representative “participative, constructive and original challenge”.
- ▶ From a moderator “Very good organization, an involving subject, real participation and interest of all the stakeholders for the subject, the place left to the students in the co-creation, and the place they were able to take, their pleasure to work together and in an interdisciplinary way, material for the students who will work to solve the challenges, the concrete aspect that it represents for them”.





AGENDA OF THE DAY

8h30 9h00	Welcome coffee and tea
9h00 9h15	Introduction
9h15 9h45	Objectives & planning of the day
10h00 12h30	First workshops in parallel sessions
12h30 14h00	Lunch time & networking
14h00 16h00	Second workshops in parallel sessions
16h15 17h15	Presentation of workshop outputs / Q&A
17h15 17h30	Wrap up

CONTACT US

Thierry DUPONT

Responsable du dispositif
Tél. : +33 (0)5 61 55 94 82
tdupont@insa-toulouse.fr

<https://lpa-insa.sciencesconf.org/>

